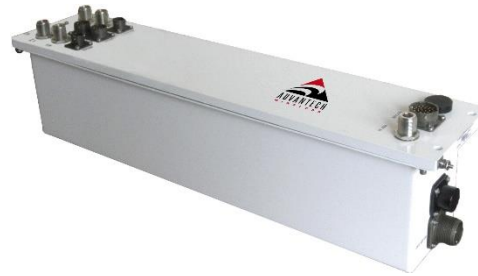


Block Converters Outdoor Series C-Band



Introduction

Advantech Wireless offers a full line of block converters for outdoor applications. The block converters could be used as standalone, 1:1 or 1:2 weatherproof assemblies. The block converters cover all Satcom bands in L, S, C, X DBS, Ku and Ka commercial and military bands based on HP series of Advantech converters. A partial listing of the C-bands could be found on page 2.

The outdoor assemblies are fully integrated with redundant integral controllers without the need for any Remote Control Panel. A remote control panel is also available for convenience purposes

Overview

The Advantech Wireless series of block converters uses the latest technology in conversion, local and remote control thus providing the ultimate in performance and user friendly operation at a very competitive price.

The spectral purity, low phase noise and stability exceed the requirements of all major international satellite network operators.

Remote management interfaces ensures complete flexibility of integration into existing or new installations. The RS485 remote interface will provide full set-up and fault monitoring facilities. Ethernet option will allow the operator to pilot system operation either through SNMP or Web based interface.

The system reference guaranteeing conversion function's accuracy can optionally be provided externally, internally as a highly stable temperature compensated oscillator, or with auto-detection capacity that will use internal reference only in the absence of an externally provided one.

Features

- Weatherproof construction for outdoor use to IP54
- Covers all Satcom bands
- Inverting or Non-inverting can be specified
- Superior phase noise performance
- Built-in internal reference
- On-site reference aging correction capability
- High linearity
- RS232, RS485 interfaces

Options

- 1:1 or 1:2 Hot Swap Redundancy
- Ethernet interface with SNMP and Web Interface
- Remote Control Panel

Redundancy

The Advantech Wireless redundant system consists of the following elements:

- 1) Converters (two for 1:1 and three for 1:2)
- 2) Universal mounting plate for either system
- 3) Switching and interface module (two types)
- 4) Interconnecting cables

As mentioned above, the Remote Control Panel is optional. The interface between the outdoor system and the Remote Control Panel is via the RS485 interface. The Remote Control Panel will also provide its own RS485 and TCP/IP interface.



Optional Remote Control Panel

Block Converters Outdoor HP Series C-Band

Technical Specifications					
Block Up Converters			Block Down Converters		
RF frequency (GHz).	IF Frequency (MHz)	Model Number	RF frequency (GHz).	IF Frequency (MHz)	Model Number
5.85-6.725	950 – 1825 (NINV)	AWUB-LCX	3.4 – 4.2	950 – 1750 (NINV)	AWDB-CXL
5.85-6.425	950 – 1525 (NINV)	AWUB-LC	5.85-6.725	950 – 1825 (NINV)	AWDB-CXL-TX
3.4-4.2	950 – 1750 (NINV)	AWUB-LCX-RX	3.4 – 4.2	950 – 1750 (INV)	AWDB-CEL
5.78-6.52	950 - 1690 (NINV)	AWUB-LCS	5.85-6.725	950 – 1825 (INV)	AWDB-CEL-TX

Notes:

- 1) The above is a partial listing, please consult the factory for any different band
- 2) For standalone non-redundant application please use the above model number.
- 3) For 1:1 redundant applications add R1 to the above model numbers.
- 4) For 1:2 redundant applications add R2 to the above model numbers

Specifications						
RF/IF Output level	+0 dBm at P1dB			+5 dBm at P1dB		
IMD3 (two tone)	-40 dBc max @ -10 dBm output					
Input / Output connectors	Type N (female)					
Conversion Gain	20 dB @ max gain setting		40 dB @ max gain setting			
Gain adjustment	20 dB (0.1 dB step size)					
Gain flatness	± 1.5 dB max. over 575 MHz		1.0 dB p-p max. over 40 MHz			
Gain stability	±0.25 dB max. /24 hours		±1.5 dB over temp. range			
Spurious (in band)	<-55 dBc carrier related @ -10 dBm		<-60 dBm non-carrier related			
Noise Figure	-60dBc		20 dB			
Image rejection	60 dB					
Phase noise @ dBm/Hz	10Hz	100Hz	1kHz	10kHz	100kHz	1MHz
	-55	-62	-72	-82	-95	-105
Reference			Mechanical			
External Reference	10 MHz (optional)		Dimensions single unit	W x H X L 4.5" x 5.0" x 21"		
Internal reference stability	± 2 x 10 ⁻⁸ over 0° to +50°C		Redundancy	W x H x L 18" x 5.15" x 30"		
Aging	± 2 x 10 ⁻¹⁰ / day ± 5 x 10 ⁻⁸ / year					
Environmental			Power Supply			
Operational	-30°C to +55°C standard		Voltage	90 – 265 VAC (47 – 63 Hz)		
Storage	-55°C to +85°C		Power	40W typ.		
Humidity	Non-condensing		Connector	MS3102R16-10P		
Altitude	3,000m AMSL					
* Other options			Monitor and Control			
1) 10MHz auto-sensing reference			RS 485	MS3112E10-6P		
			RS 232	MS3112E10-6P		
			Discrete	MS3112E10-6P		
			Redundancy	MS3112E16-16P		
			Ethernet (optional)	MS3112E10-6P		

Ref.: PB-FCS-HP-C-Band-Block-19027

NORTH AMERICA

USA
info.usa@advantechwireless.com

CANADA
Info.canada@advantechwireless.com

EUROPE

UNITED KINGDOM
info.uk@advantechwireless.com

SOUTH AMERICA

info.latam@advantechwireless.com

BRAZIL
info.brazil@advantechwireless.com

ASIA

info.asia@advantechwireless.com

INDIA
info.india@advantechwireless.com