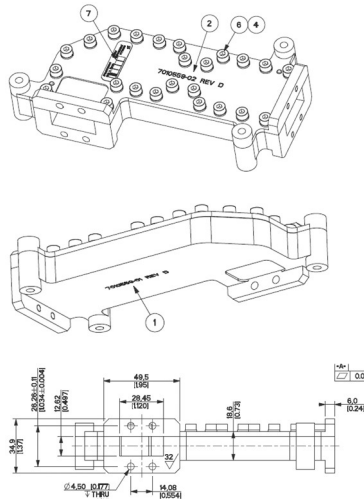
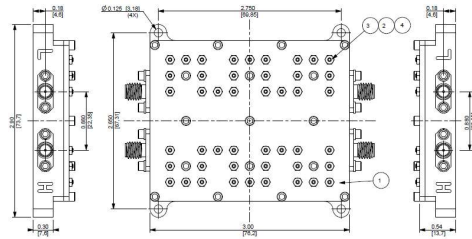


# Filter For Telecom Systems

## Features

- High power handle capability
- Wide band operation
- High isolation within operational band
- Low Insertion loss
- Different frequency and flange available upon request

ELECTRICAL PROPERTIES	
PASSBAND L ( LOW )	4.40 - 4.65 GHz
PASSBAND H ( HIGH )	4.75 - 5.00 GHz
REJECTION L	85 dB MIN DC - 4.312 GHz 85 dB MIN 4.738 - 10.0 GHz
REJECTION H	85 dB MIN DC - 4.662 GHz 85 dB MIN 5.088 - 10.0 GHz
RETURN LOSS L & H	23 dB MIN
INSERTION LOSS L & H	1.1 dB MAX
POWER RATING L & H	10W C.W. MIN
MECHANICAL PROPERTIES	
PORT ANT / L / H	CONNECTORS SMA FEMALE
SIZE	2.75" X 2.65" X 0.54" (69.85mm X 67.3mm X 13.7mm)
MATERIAL	ALUMINUM 6061
FINISH	FINISH 4:5
WEIGHT	0.33 Lbs [150g]
ENVIRONMENTAL PROPERTIES	
OPERATING TEMP	-40°C TO +60°C
STORAGE TEMP	-40°C TO +70°C
RELATIVE HUMIDITY	5-95% NONCONDENSING



ELECTRICAL PROPERTIES	
PASSBAND	7.1 - 8.5 GHz
REJECTION	50 dB, MIN @14.2 - 17.0 GHz 50 dB, MIN @21.3 - 25.5 GHz
INSERTION LOSS	0.2 dB, MAX
RETURN LOSS	30 dB MIN
POWER RATING L & H	500W C.W. MIN
MECHANICAL PROPERTIES	
PORT ANT / L / H	CMR-112
SIZE	5.64" X 2.75" X 1.18" (143.3mm X 70.0mm X 30.0mm)
MATERIAL	ALUMINUM 6061
FINISH	SILVER PLATE
WEIGHT	
ENVIRONMENTAL PROPERTIES	
OPERATING TEMP	-10°C TO +60°C
STORAGE TEMP	-40°C TO +70°C
RELATIVE HUMIDITY	5-95% NONCONDENSING

Ref.: PB-AWT-Passive-23300

### NORTH AMERICA

**USA**  
info.usa@advantechwireless.com

**CANADA**  
Info.canada@advantechwireless.com

### EUROPE

**UNITED KINGDOM**  
info.uk@advantechwireless.com

### SOUTH AMERICA

info.latam@advantechwireless.com

**BRAZIL**  
info.brazil@advantechwireless.com

### ASIA

info.asia@advantechwireless.com

**INDIA**  
info.india@advantechwireless.com